



## Used Komatsu PC110 Construction Excavator Efficient Maximum Main Pump Flow

Our Product Introduction

more products please visit us on [used-excavatormachine.com](http://used-excavatormachine.com)

### Basic Information

- Place of Origin: Japan
- Brand Name: Used Komatsu Excavator
- Model Number: 110
- Minimum Order Quantity: 1set
- Price: Negotiable
- Packaging Details: Container Or Bulk
- Delivery Time: 5-8 work days
- Payment Terms: L/C, D/A, D/P, T/T, Western Union, MoneyGram
- Supply Ability: 100 units per month



### Product Specification

- Location: China
- Bucket Type: Backhoe
- Coolant: 13.4L
- Maximum Main Pump Flow: 226 L/min
- Model: PC110
- Fuel Tank Capacity: 247L
- Travel Hydraulic Circuit: 35.5Mpa
- Type: Crawler Excavator
- Highlight: Second Hand Komatsu Crawler Excavator, Used Komatsu PC110 Construction Excavator, Construction Used Komatsu Excavator



### More Images



## Product Description

### Flexible Operation Used Komatsu PC110 Excavator

#### Product Description:

Komatsu Earth Moving Excavator is a heavy equipment excavator featuring a Backhoe bucket type, 35.5Mpa travel hydraulic circuit, a Komatsu SAA4D95LE-3 engine, a 247L fuel tank capacity, and is located in China. It is designed to help you tackle the toughest jobs with ease and is an ideal choice for earth moving applications. This Komatsu Earth Moving Excavator is the perfect choice for construction projects, landscaping tasks, and other heavy-duty jobs. It is equipped with the latest technology and features that provide a high level of performance and efficiency. This Komatsu Earth Moving Excavator is rugged and reliable, making it an excellent choice for excavating, digging, and other earth moving tasks. With its powerful engine, efficient hydraulics, and impressive bucket capacity, this Komatsu Earth Moving Excavator is sure to help you get the job done quickly and easily.

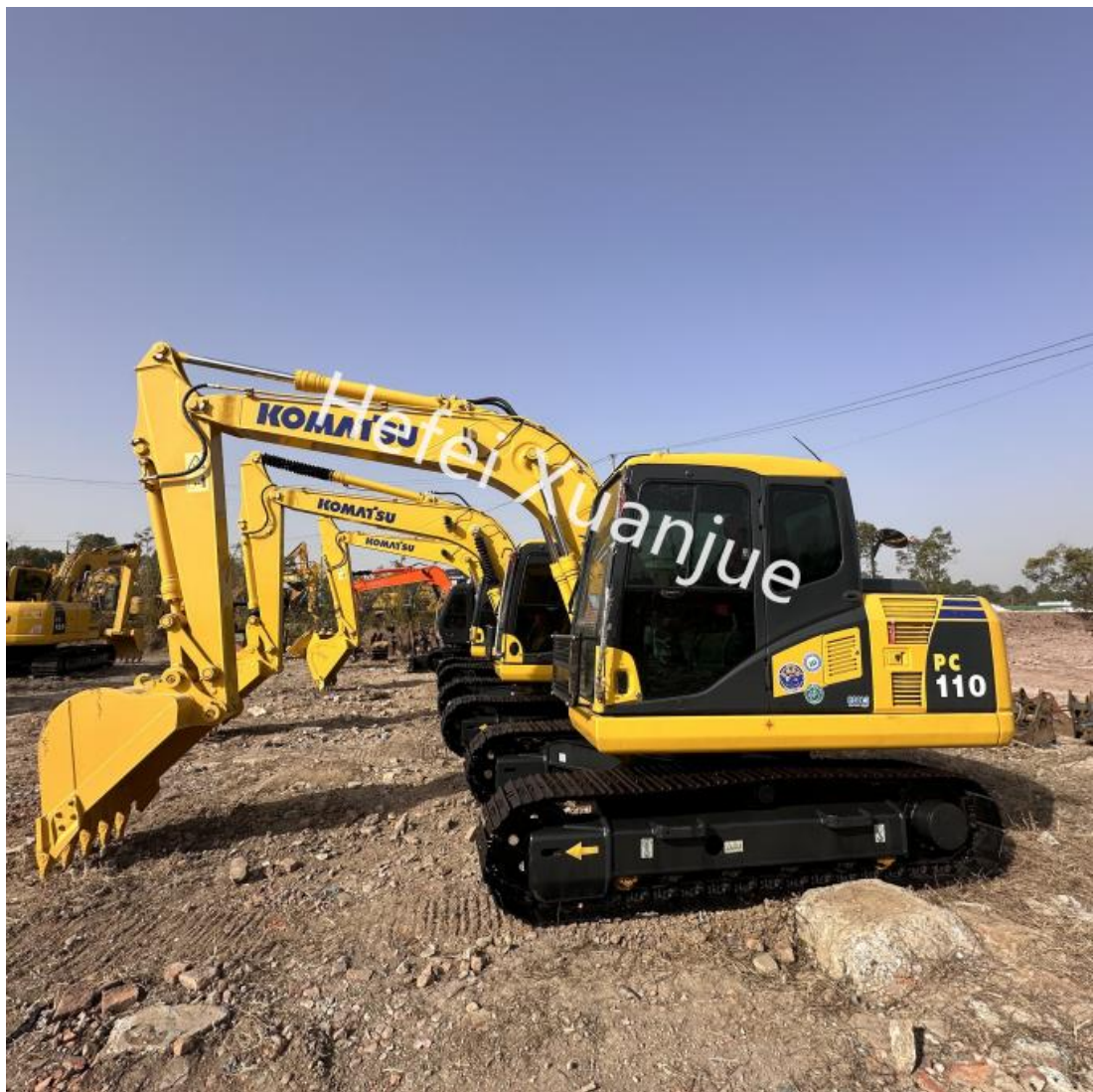
#### Features:

Product Name: Used Komatsu Excavator  
Model: Komatsu Earth Moving Excavator PC110  
Operating Weight: 10.98t  
Coolant: 13.4L  
Engine: Komatsu SAA4D95LE-3  
Bucket Type: Backhoe

#### Advantage:

With a conventional power source and a maximum output power of 65kW, the PC110 delivers robust performance in terms of digging force, speed, and efficiency. The excavator features a hydraulic system with a maximum main pump flow of 226L/min, ensuring efficient and precise operation during various tasks. The machine's weight distribution, counterweight design, and rear swing radius contribute to its stability during operation, enhancing safety and control.

#### Gallery:











**Technical Parameters:**

Parameter	Value
Model	PC110
Bucket Type	Backhoe
Operating Weight	10.98t
Fuel Tank Capacity	247L
Type	Crawler Excavator
Bucket Capacity	0.48 Cubic Meters
Travel Hydraulic Circuit	35.5Mpa
Coolant	13.4L
Engine	Komatsu SAA4D95LE-3
Maximum Output Power	65kW

**Applications:**

Used Komatsu Excavator is a leading brand of hydraulic excavator, which is perfect for a wide range of earth moving applications. The model PC110, with its advanced Komatsu Digging Excavator technology, provides maximum main pump flow of 226 L/min, fuel tank capacity of 247L and maximum output power of 65kW. Its 13.4L coolant capacity ensures optimal performance during operations. This Used Komatsu Hydraulic Excavator is engineered for maximum efficiency and productivity in earth moving applications. It is designed to meet the highest standards for safety, reliability and comfort. With its advanced features and ergonomic design, it provides operators with an easy, safe and efficient way to complete their earth moving tasks. Used Komatsu Earth Moving Excavator is the perfect choice for those seeking a reliable, powerful and productive excavator.

## Packing and Shipping:

Packaging and Shipping for Used Komatsu Excavator:

We use standard-size packaging for Used Komatsu Excavator.

We ship our Used Komatsu Excavator with trusted and reliable shipping services.

We ensure that Used Komatsu Excavator is packed safely and securely.

We make sure that Used Komatsu Excavator reaches its destination without any damage.

## FAQ:Xuanjue Serve For You, Best Quality And Lowest Price

Q1: What is the Brand Name of the Used Komatsu Excavator?

A1: The Brand Name of the Used Komatsu Excavator is Used Komatsu Excavator.

Q2: What is the Model Number of the Used Komatsu Excavator?

A2: The Model Number of the Used Komatsu Excavator is 110.

Q3: Where is the Used Komatsu Excavator made?

A3: The Used Komatsu Excavator was made in Japan.

Q4: What is the weight of the Used Komatsu Excavator?

A4: The weight of the Used Komatsu Excavator depends on the model.

Q5: What is the maximum digging depth of the Used Komatsu Excavator?

A5: The maximum digging depth of the Used Komatsu Excavator depends on the model.

**If you have any questions, you can call and send an email at any time and leave a message. We will answer you as soon as possible after seeing it.**



**Hefei Xuanjue Construction Machinery Co., Ltd.**



13385604601



used-excavatormachine.com

Sanshitou,Xinzhan District,Feidong County,Hefei City,Anhui Province,China